

CREATIVE AWL

leather patterns

HIP BAG

PREPARED BY:

Patryk Ku, Creative Awl

LET'S GO:

PRINT THE PATTERN

01

-Open your pattern in Adobe Acrobat Reader. Set up options of your printer on A4 paper with 0 margins.

-Every page has a measure - check does it fit.

- Every printed page **MUST HAVE** a border around! If doesn't - move paper left/ right and print again

FOLLOW VIDEO INSTRUCTIONS

02

Video tutorial:

<https://youtu.be/QFaLuoRoLWU>

Cutting patterns:

https://www.youtube.com/watch?v=2TNUl_Tlk64

Dyeing: <https://youtu.be/v6fF9k2RBcY>

03

GIVE A SMILE TO OTHER PEOPLE!

Give a ready product to you family or freind. Give them a smile :)))

04

CHECK OUR AWESOME FB GROUP

Go there to share your work. Also get more DIY&ideas. We will support you & answer all questions.

<https://www.facebook.com/groups/CreativeAwlPatterns>

YOU NEED

MATERIALS

- Leather (preferable 2mm | 5oz)
- Waxed thread (preferable 0,8-1 mm)

TOOLS

- sharp knife
- 1mm hole puncher or pricking irons or awl
- hammer
- 2 needles
- paper tape
- a home printer



SHARE YOUR WORK

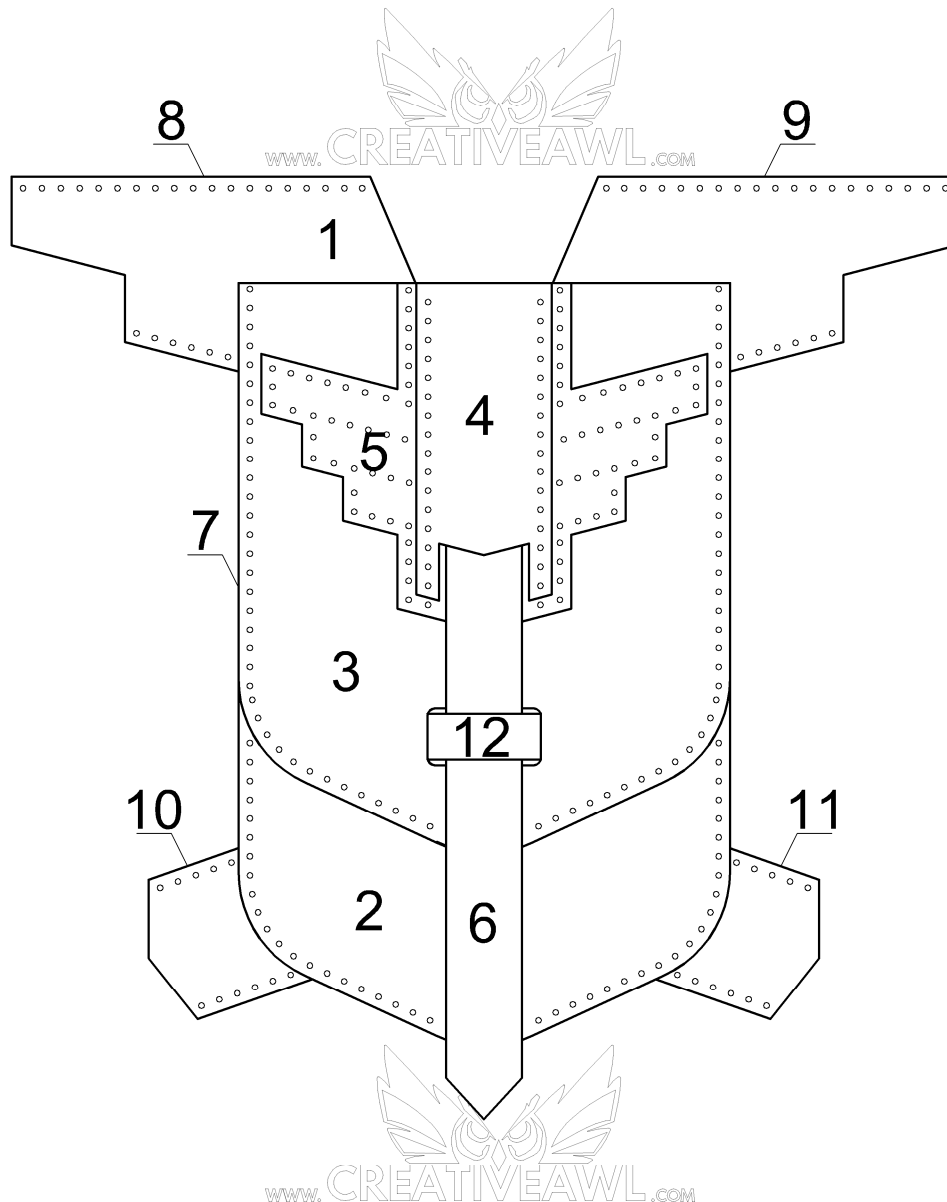
<https://www.facebook.com/groups/CreativeAwlPatterns>

If you got ANY problem,- don't be shy to ask directly on Etsy or facebook

Small hip bag:

pages 1 - 8

- The number in the circle shows which holes are to be connected. Example: ①
- Numbers 1, 2, 3 (...) without a circle indicate where the piece lies in the overview drawing.

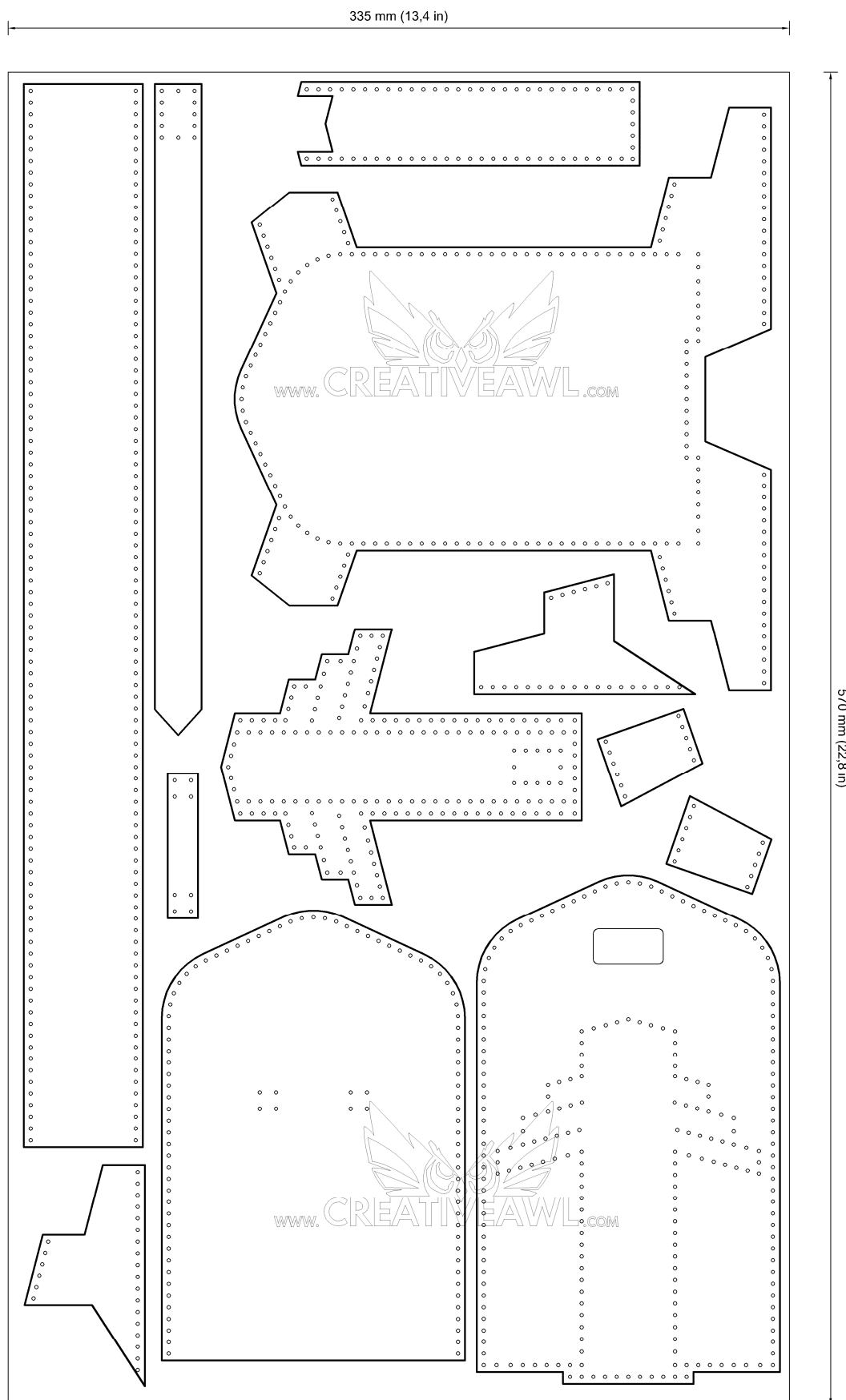


A4

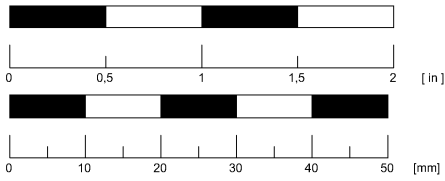
Sketch drawing 1 : 2

Leather needed for a small hip bag:

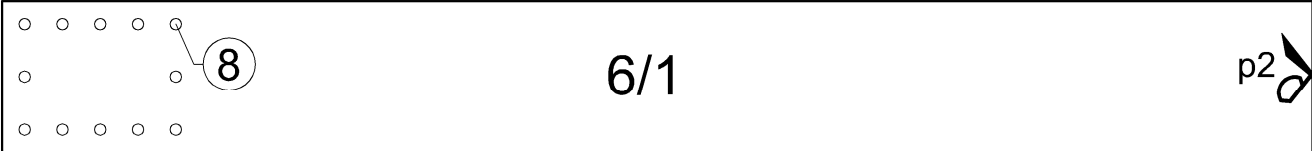
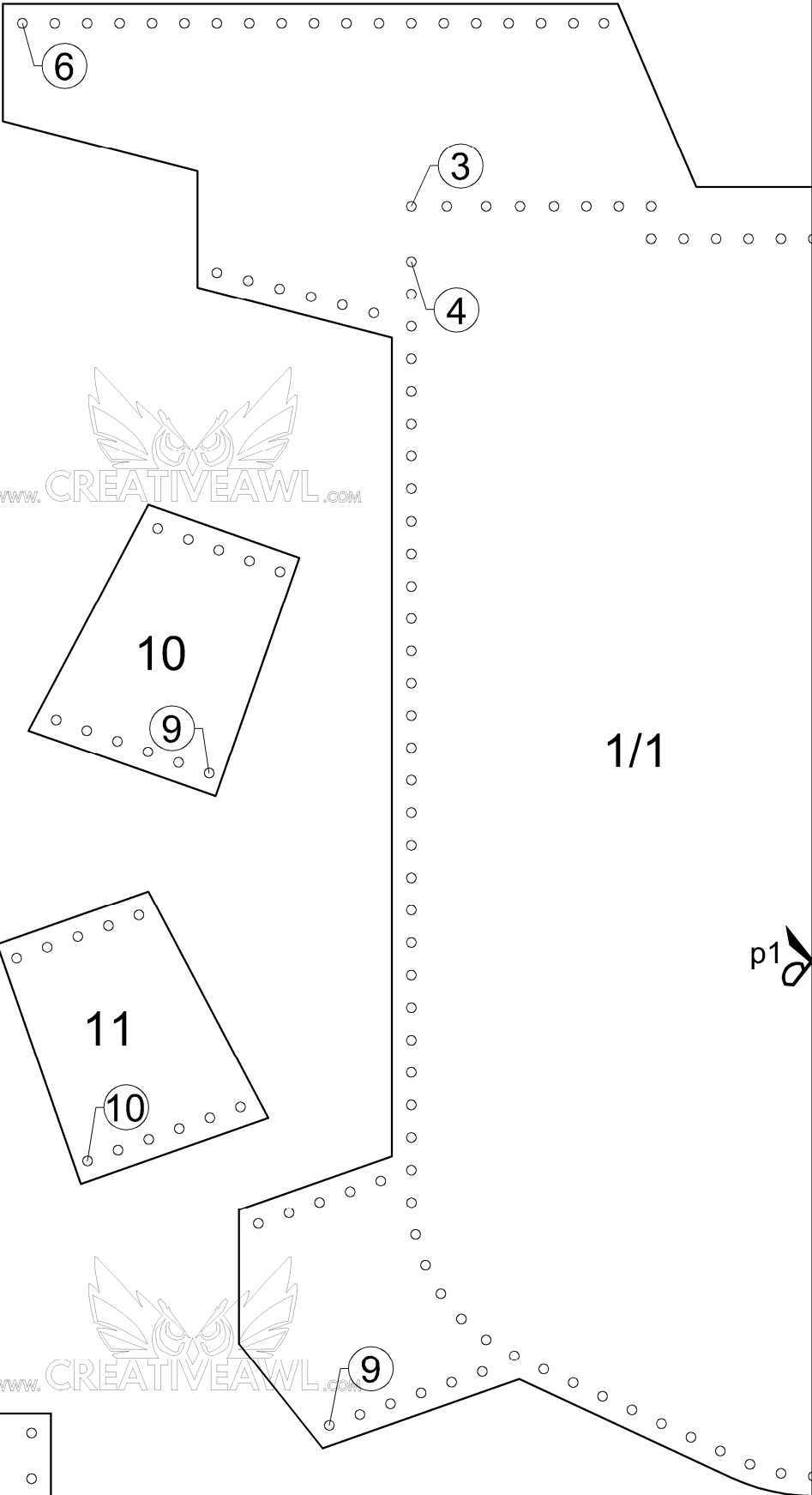
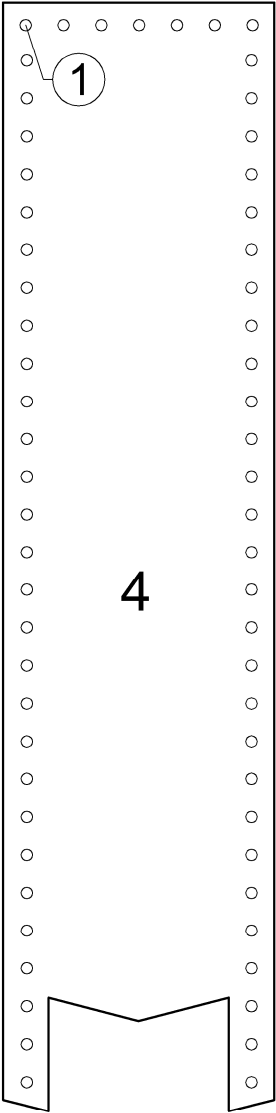
about 0,20 m2

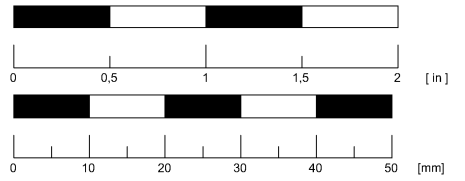


Sketch drawing
Bill of materials



Small hip bag





Small hip bag

A4

1/2

5

6/2

7/1

10

7

2

1

8

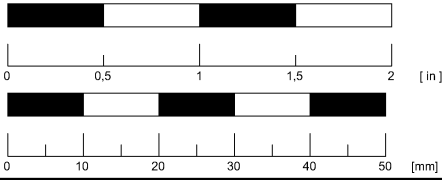
5

4

p3

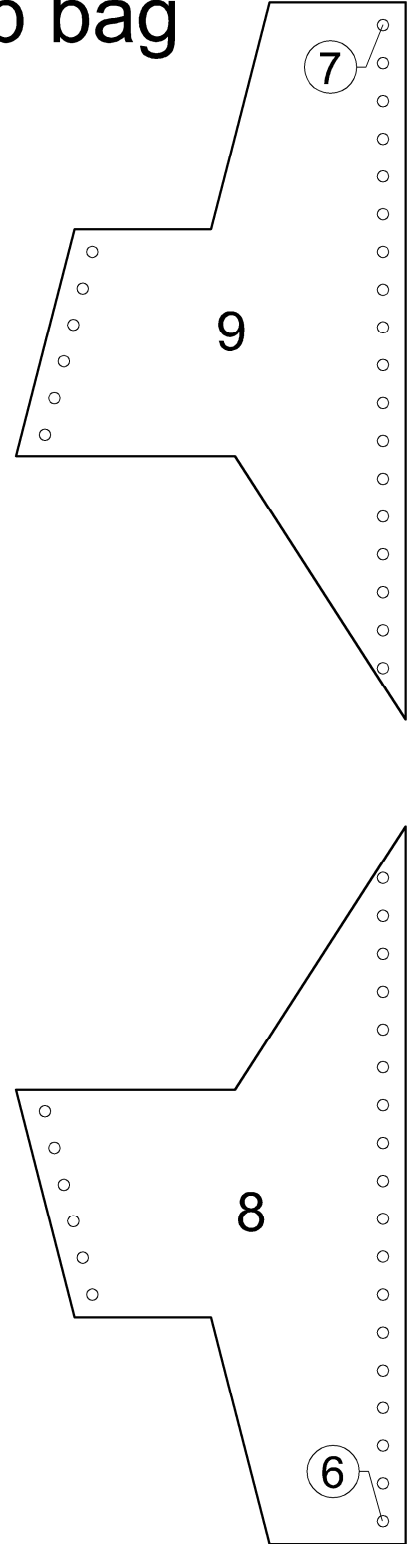
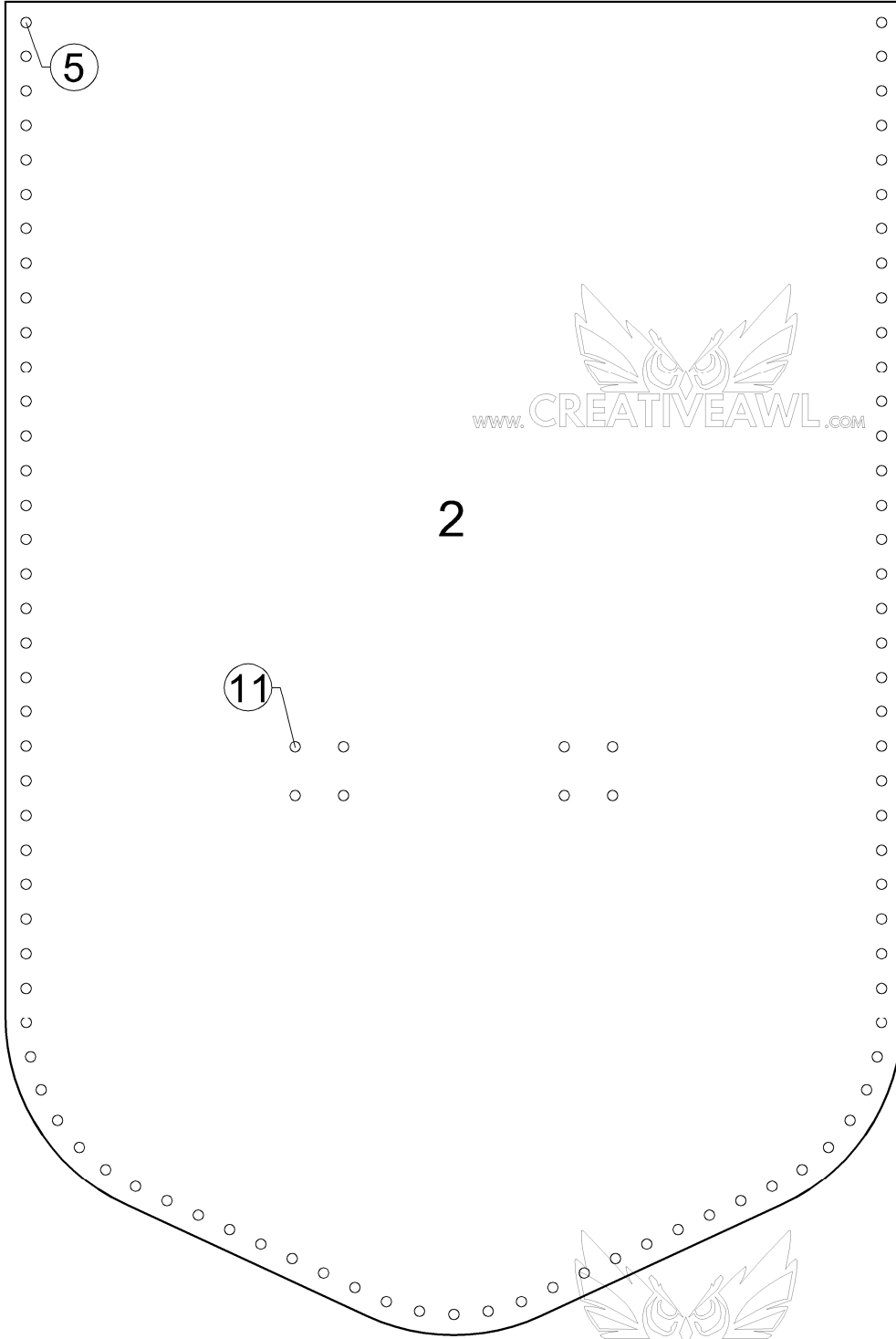
p1

p2



A4

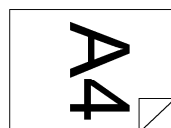
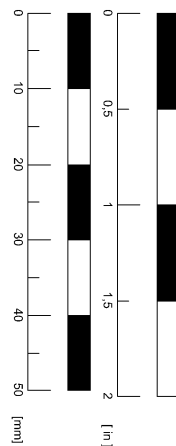
Small hip bag



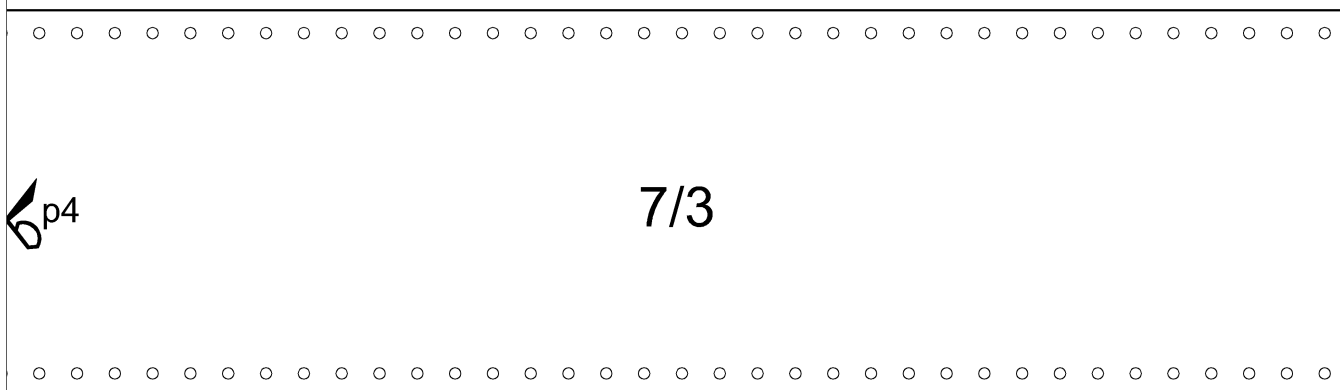
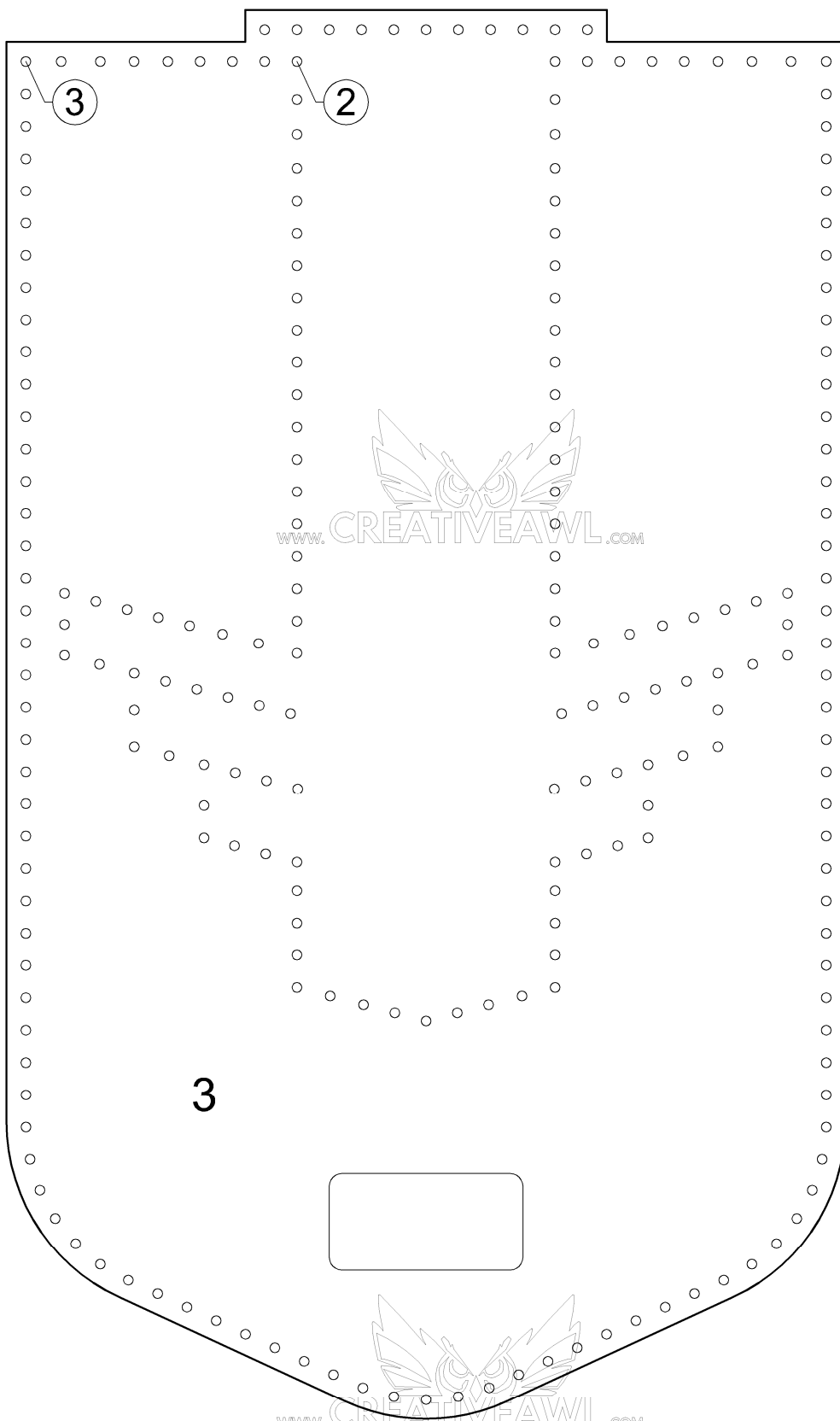
p3

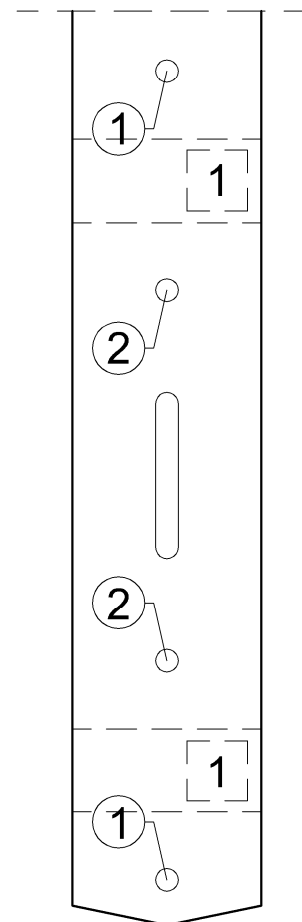
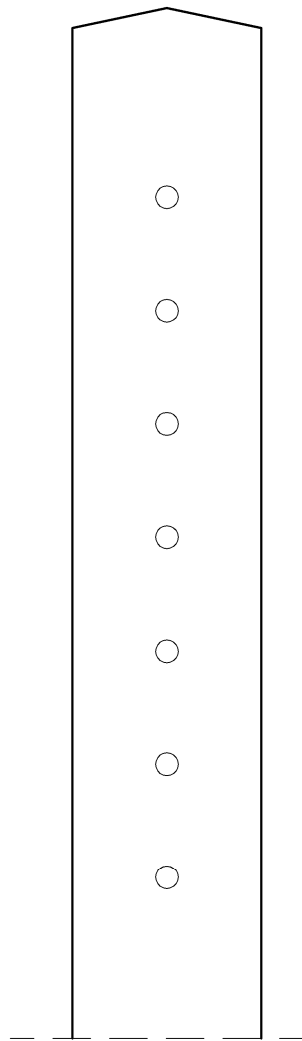
7/2

p4

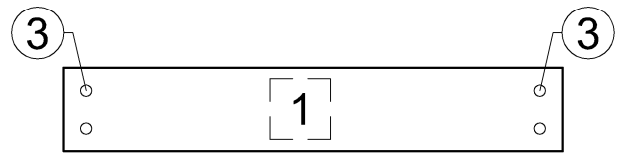


Small hip bag

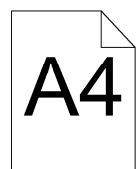
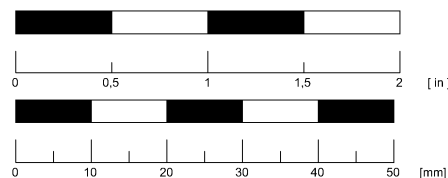


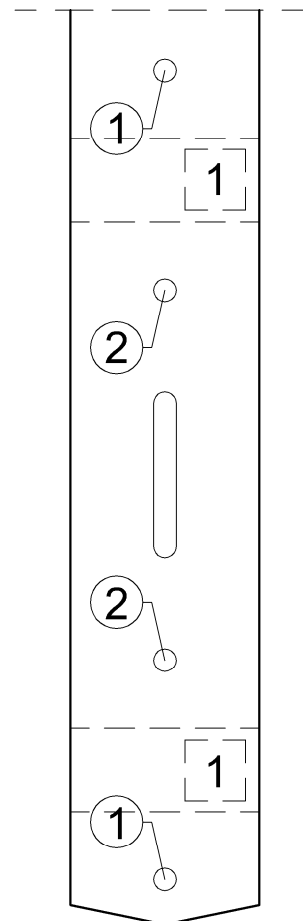
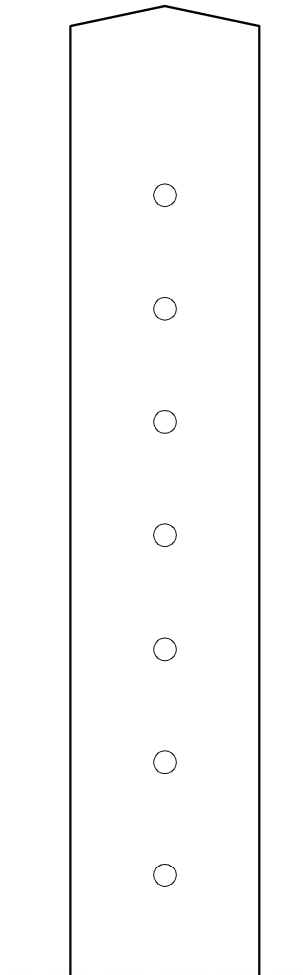


waist circumference + about 25 - 40 cm (10 - 16 in)

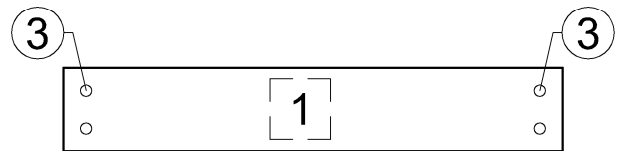


waist strap
"25 mm"





thigh circumference + about 25 - 30 cm (10 - 12 in)



thigh strap
"25 mm"

